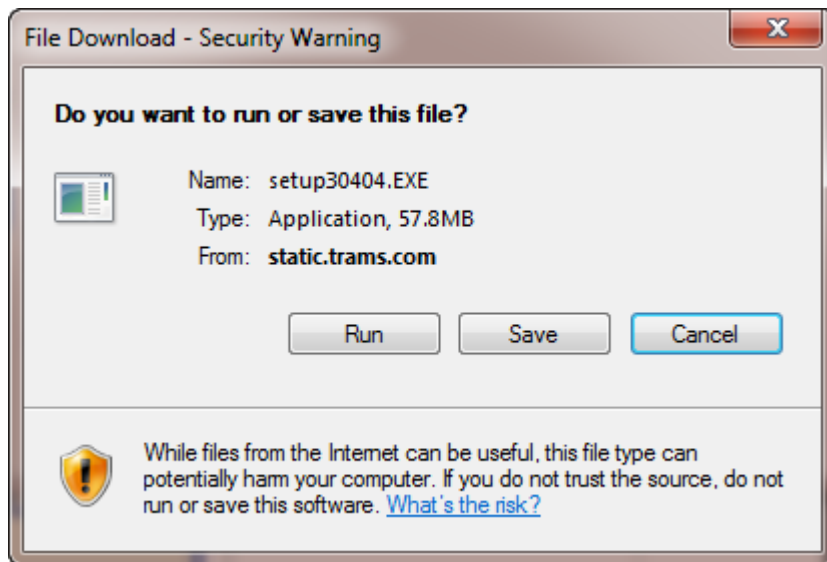


Installing Trams Back Office

Trams Back Office Installation with InterBase XE

Reminder before installing, a *Trams* Implementation rep will be calling (**implementation@Trams.com**) to assist with this process.



Step 1: Download the Program File: (First install TBO version 3.04.04 and then upgrading the version to 3.04.xx.) After selecting the computer that functions as the *Trams* Back Office computer, download the *Trams* Back Office installation .exe file onto a folder on the computer's hard drive. (To network this program, make a shared folder that can be accessed from the workstations on the network.) The file is quite large so this may take some time to download with a slow connection.

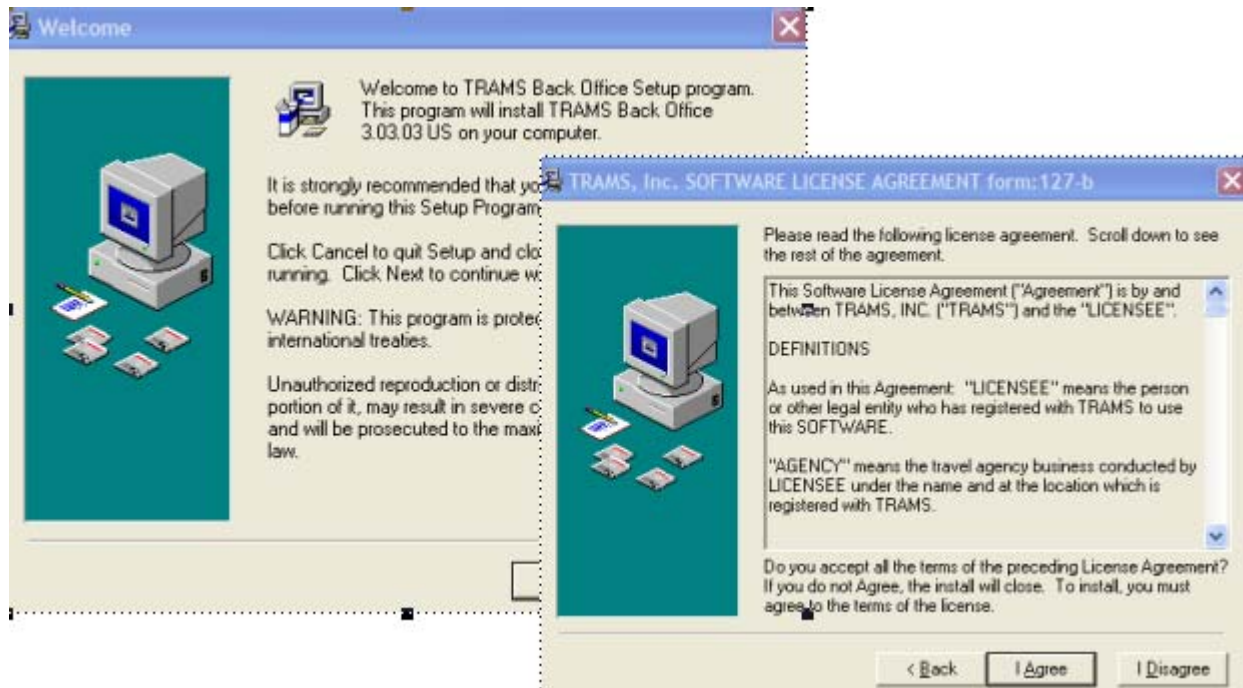
Trams Back Office Installation Files All Countries:

<http://static.trams.com/tramslibrary/Releaseandupdatefiles/fullcd/TBO/setup30404.EXE>

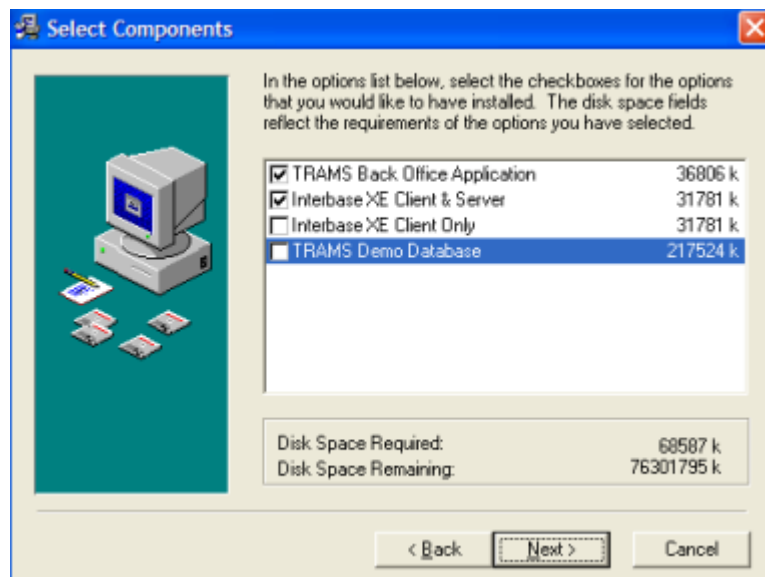
Step 2: Run the *setup.exe*. Go to **Start|Run** to browse to the folder that holds the downloaded file. Double-click the file to be launched into an installation wizard. Click *Run*.

Installation

Step 3. Select *Next* at the Welcome Screen and *Agree* at the Software License Agreement form.

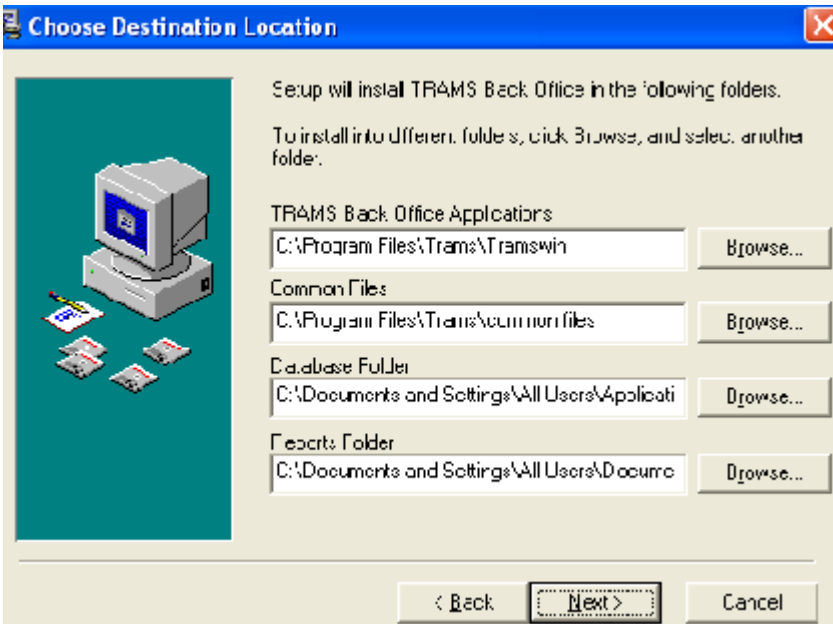


Step 4. Select the components to install (default selections are already checked for stand-alone users and servers). Select *Trams License Manager* only when installing program on server (a single computer is Interbase Client/Server. If ClientBase is already installed on the server, the selection is IB client only.) The server installs *Interbase Client & Server*. If setting up multi-user workstations, select the *Interbase Client Only* option for the workstations.



Step 5. Select the Destination folders (where *Trams Back Office* files are to loaded). We strongly

recommend using the default destination folder:



For XP/2003 Server, the path would be this:

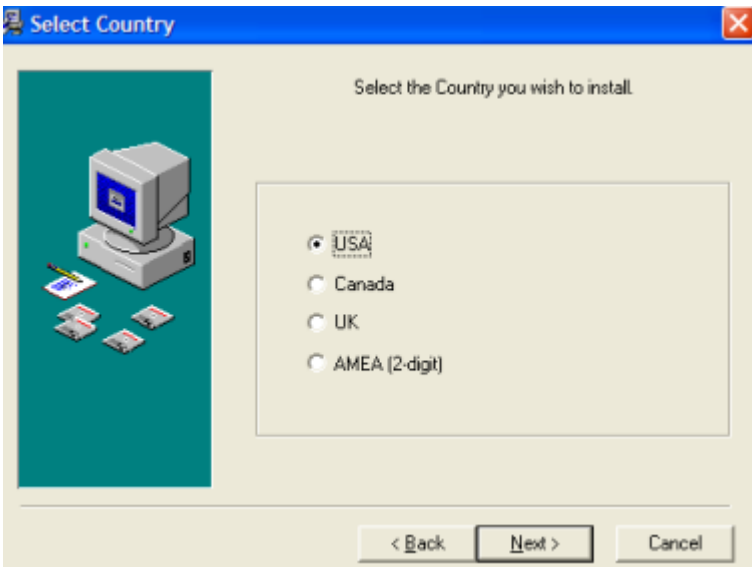
C:\Documents and Settings\All Users\Application Data\Trams\Database\Trams.ib

For Vista, Windows 7 and Windows 2008 Server, the path would be:

C:\ProgramData\Trams\Database\Trams.ib

Click **Next**.

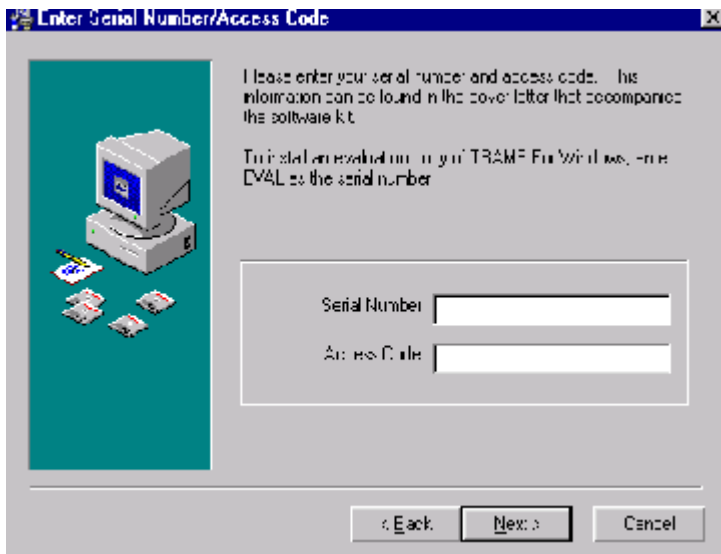
Step 6. Select the Country you wish to install.



Step 7. Enter the serial number and access code found in the welcome email received from Trams. Please contact the Trams Marketing Department at marketing@Trams.com or support@Trams.com if it

Installation

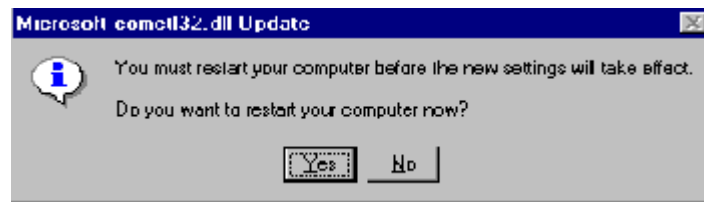
cannot be located. Click *Next*.



Step 6. Enter the serial number and access code for Interbase Server. Clicking *Next* verifies the access code, and serial number for the number of users and computers for which Interbase has been purchased (this serial number and access code are in the welcome email). Click *OK*. Another screen pops up that says requires that the Interbase Serial # and Access code now need to be entered as the system is now ready to install Interbase.

Step 7. Select *Next* to install files.

Step 8. Restart the computer before continuing.



Step 9: Run the CBPlusup.exe file for encryption purposes by clicking here.

Step 10: After installation is complete, a blank database with the filename of TRAMS.ib is created. When launching Trams Back Office you see the screen, shown below, defaulting to your Trams alias, asking for a User Name and Password. Your password was sent to you under separate cover.

This completes the installation of TBO version 3.04.04. Now you need to update your program by going here and following the directions to upgrade to newest version of TBO.

Multuser Installation

Go to each workstation and browse to the shared folder where the *Trams Back Office* installation setup.exe. Use the install components of InterBase Client Only, *Trams Back Office*, and *Trams Back Office* Documentation on each of the computers with access to *Trams Back Office*.

After each workstation has *Trams Back Office*, point the Alias to the correct database file. Go to **Start|All Programs|Trams Back Office Alias Utility**. Go into the *Trams* Alias, change the path to point to the *Trams.ib*, located on the server using the format required for the network:

Remote via TCP/IP

For XP/Windows 2003 Server, the default path is this:

Server Name: C:\Documents and Settings\All Users\Application Data\Trams\Database\Trams.ib

For Vista/Windows 7/2008 Server, the default path is this:

Server Name:C:\ProgramData\Trams\Database\Trams.ib

For Agencies Using ClientBase and Adding Trams Back Office

If the agency has been using ClientBase and have decided to add *Trams* Back Office, follow these instructions:

1. Upgrade the ClientBase program to latest version.
2. On the Server, proceed with the *Trams* Back Office Installation as outlined above (make sure to install correct latest version).
3. When installation is complete on Server, go to **Start|Programs|Trams Back Office** and run the utility **TBO Update**.
4. Proceed to install *Trams* Back Office as outlined above on all workstations.

For help, please email implementation@Trams.com.

Installation