

Trams Crystal Report Viewer for Crystal Reports Version 10

Requirements

Pentium II 450-Mhz Processor (Pentium III 600-Mhz recommended)
128 MB RAM (256 MB recommended)
Windows 2003 or 2008
Windows XP SP 3
Windows Vista
Windows 7
Microsoft ODBC 3.0 or higher
Trams Back Office or ClientBase For Windows

The Trams Crystal Report Viewer opens and runs reports designed with Business Objects Crystal Reports version 10 without requiring the Crystal Reports software. This viewer includes the Crystal Reports runtime engine. The viewer itself is a program that reads Crystal Report files and allows the user to log on to the ODBC Datasource associated with those reports.

WARNING: This program installs files necessary to run reports built with Business Objects Crystal Reports version 10 or lower. Installing this program on computers that have Business Objects Crystal Reports 10 already installed may invalidate the Business Objects Crystal Reports 10 installation.

SPECIAL NOTE IF YOU ARE REINSTALLING A Trams PRODUCT: The safest way to reinstall a Trams product is to download and reinstall the product from the Trams ftp site at <ftp://ftp.trams.com/pub/fullcd/> . It is not recommended that you reinstall products from a CD as you want the latest version of all products available.

Installation

WARNING: If on Terminal Services, you must use Start / Control Panel / Add or Remove Programs for Windows XP and lower Operating systems, Start / Control Panel / Programs and Features for Windows Vista and higher Operating Systems to install TCR10.

The installation is simple. The setup program asks you to specify a location for the viewer program. The default location is in your Trams folder:

C:\program files\Trams\TCR10\TCR.exe

In addition, the setup program installs the Crystal runtime files on your local drive. You can install the program anywhere on your computer; however, the installation creates a shortcut in the Trams for Windows folder of your Start Menu and a shortcut on the Desktop.

NOTE: Do not change the default installation location if you wish to run the Trams Crystal Reports Viewer through Trams Back Office.

Before you run TCR10 for the first time

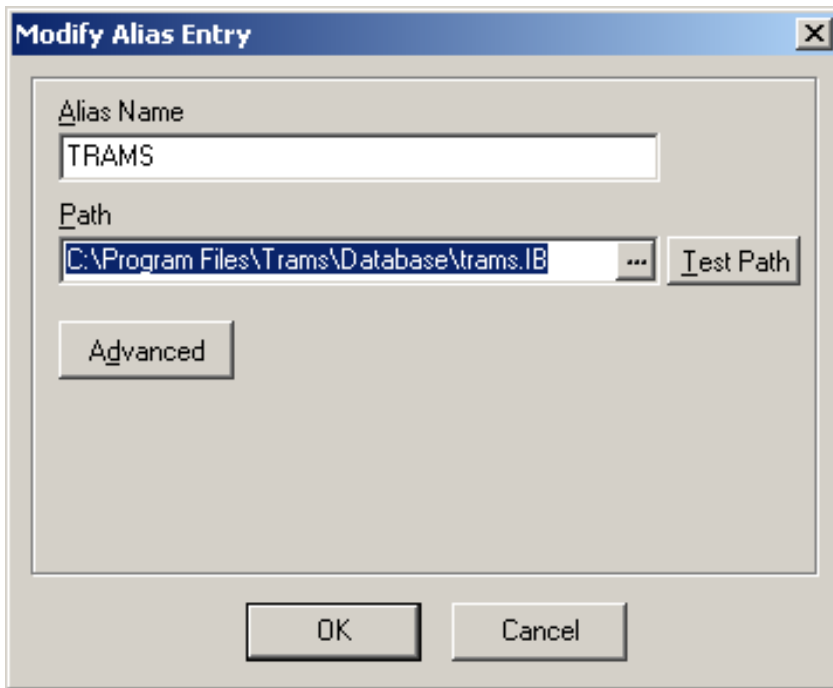
TCR10 connects to the Trams database using *Open DataBase Connectivity* (ODBC). This must be setup correctly or TCR10 will not function and will not display any reports.

Step 1: Copy your database path

When setting up the ODBC driver, you will need to supply the path to your database. You should copy your database path so that it's ready to paste into the configuration screen when needed.

Go to Start / All Programs / Trams Back Office or Start / All Programs / Trams / and click on Alias Utility. Choose the Modify button and highlight the path. Press Ctrl C, to copy the Path, and close the Alias Utility.

The path should look something like this when highlighted:



Alias Utility Modify Screen

Step 2: Open the ODBC Data Source Administrator Panel

For computer with a 32-bit version of Windows, the ODBC control panel (Odbcad32.exe) is accessed by going to Start / Control Panel, opening Administrative Tools, and then opening Data Sources (ODBC)

For computers with a 64-bit version of Windows: There are two ODBC control panels, one for 32-bit and one for 64-bit. In order to access the 32-bit version of the Odbcad32.exe file where the InterBase ODBC drivers are installed, you have to access it thru the following path:

%systemdrive% \ Windows \ SysWoW64 \ Odbcad32.exe. For most computers, the path will be C:\Windows\SysWoW64\Odbcad32.exe

Step 3: Verify the Interbase Driver is installed

Click on the Drivers tab. There are different ODBC drivers, depending upon your version of InterBase. If you are currently on Interbase 7.1 then you should see the Easysoft IB7 ODBC driver in the list. If you are currently on Interbase 2007 then you should see the DataDirect ODBC driver.

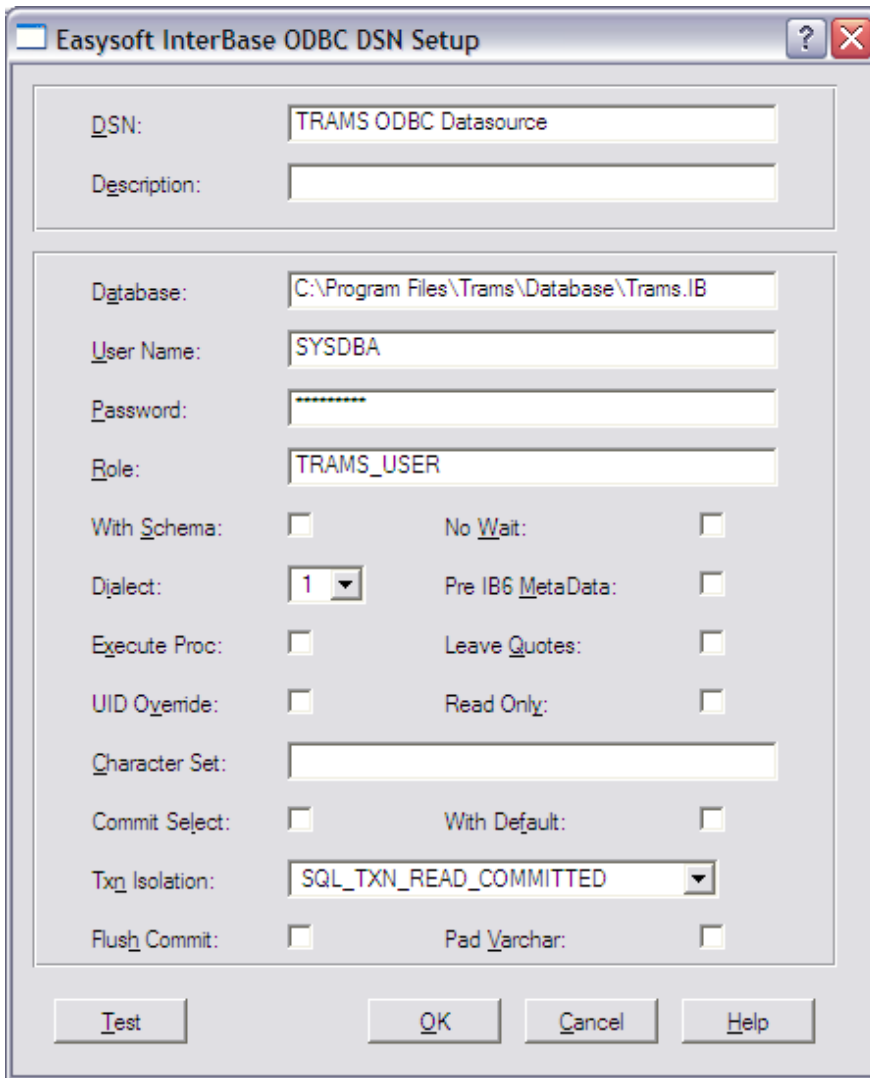
If you do not have either of the drivers listed, the ODBC drivers can be reinstalled. Please give our support desk a call to get assistance with this.

Step 4: Configure the Trams ODBC Data Source

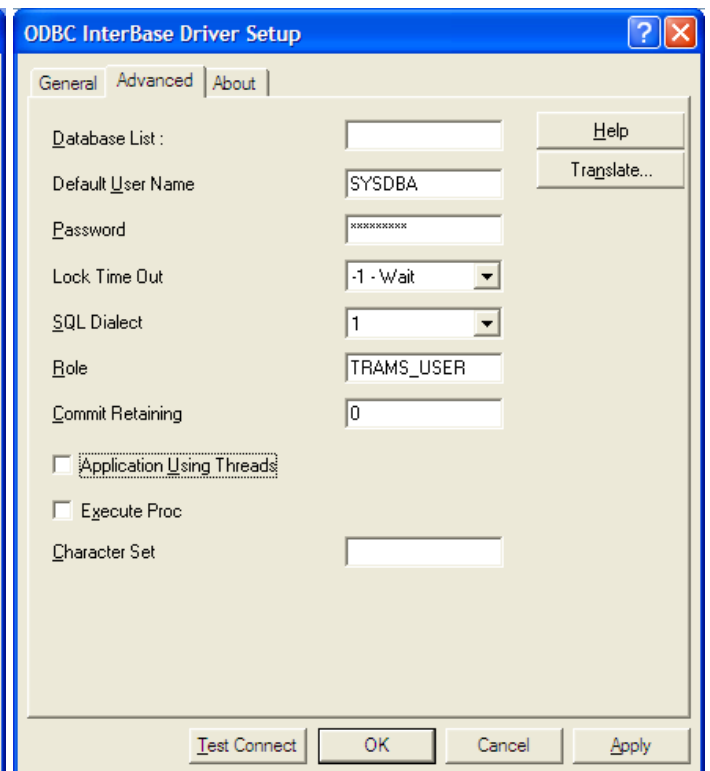
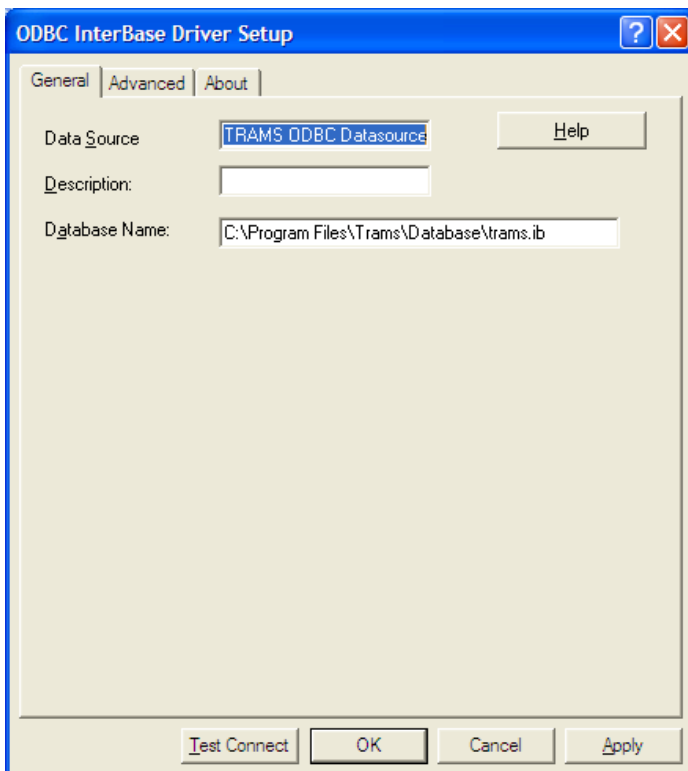
Click on the **System** DSN tab.

If you have an entry called TRAMS ODBC Datasource, click on it, and then click on Configure. If it is not there, Click on Add. Choose either Easysoft IB7 ODBC or DataDirect ODBC for Interbase and then click Finish. In either case you will be on the configuration screen next.

Further steps follow after the screen snaps. (The first shows the Easysoft driver setup, the second two show the DataDirect driver setup).



EasySoft IB7 ODBC Configuration



DataDirect ODBC for Interbase Configuration

If the Datasource name or DSN is not already filled in, type TRAMS ODBC Datasource as seen in the screen shots. Next, go to field to the right of Database or Database Name and click there. Press Ctrl V on your keyboard to paste the database path that was copied in step 1.

Note: Insert **localhost:** (if it is not already there) in front of the Database path if using the Windows Vista or Windows 7 operating system and you are at the database server. If you are at a workstation, leave what was pasted as is.

(If configuring the DataDirect driver, click the Advanced tab at this time.)

Enter SYSDBA as the User Name, or Default User Name, and enter the Password.

Verify that Dialect is set to 1, not 3, and that TRAMS_USER is listed in the Role box for both.

Verify that the "Application Using Threads" box is unchecked if using the DataDirect driver.

Click on Test or Test Connect to verify the connection to the database.

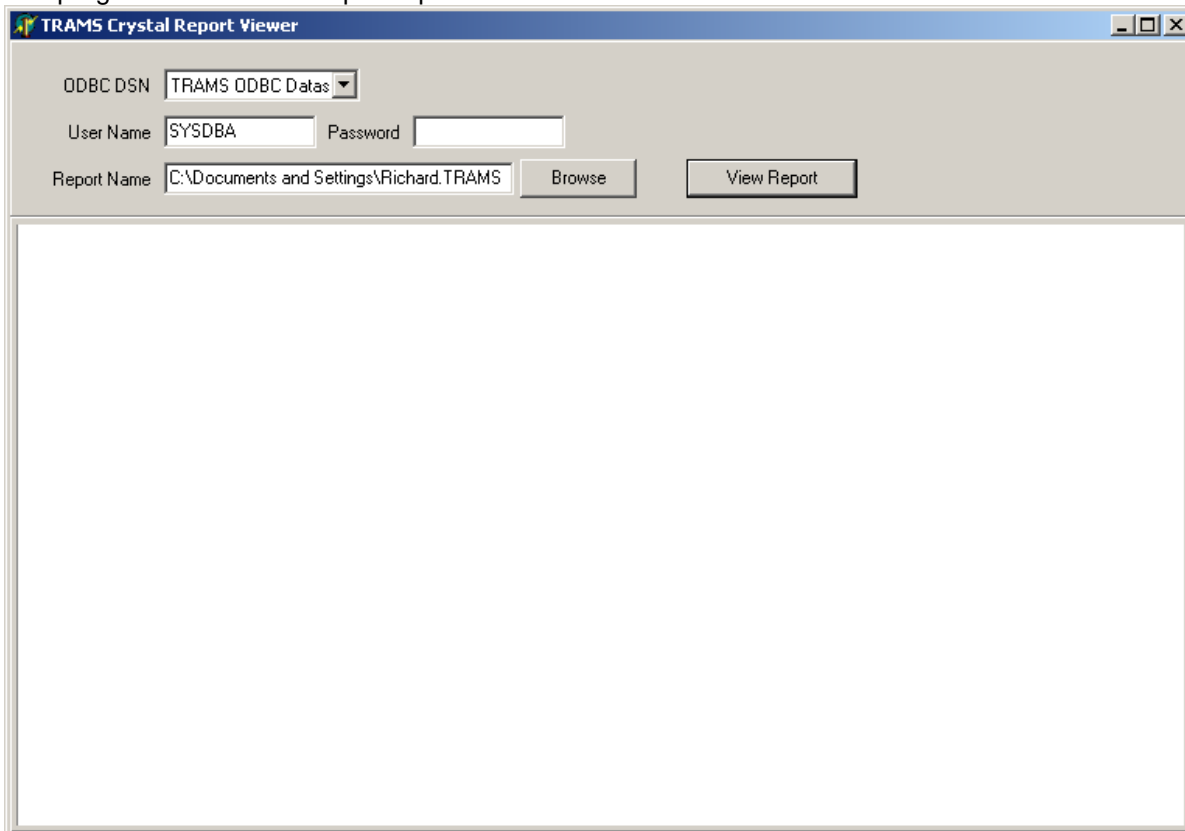
DSN verification. Verify that there are *NO* TRAMS ODBC Datasource listings under the User DSN or the File DSN tabs. Also, verify that there is not more than one called TRAMS ODBC Datasource on the System DSN Tab. If there is, highlight and delete all but one and then configure it following the steps above.

Program Operation

To run the program go to Start / Programs / Trams for Windows / TCR10 or click on the shortcut on the Desktop.

To open the program in Trams Back Office, select **Reports|TCR Viewer**.

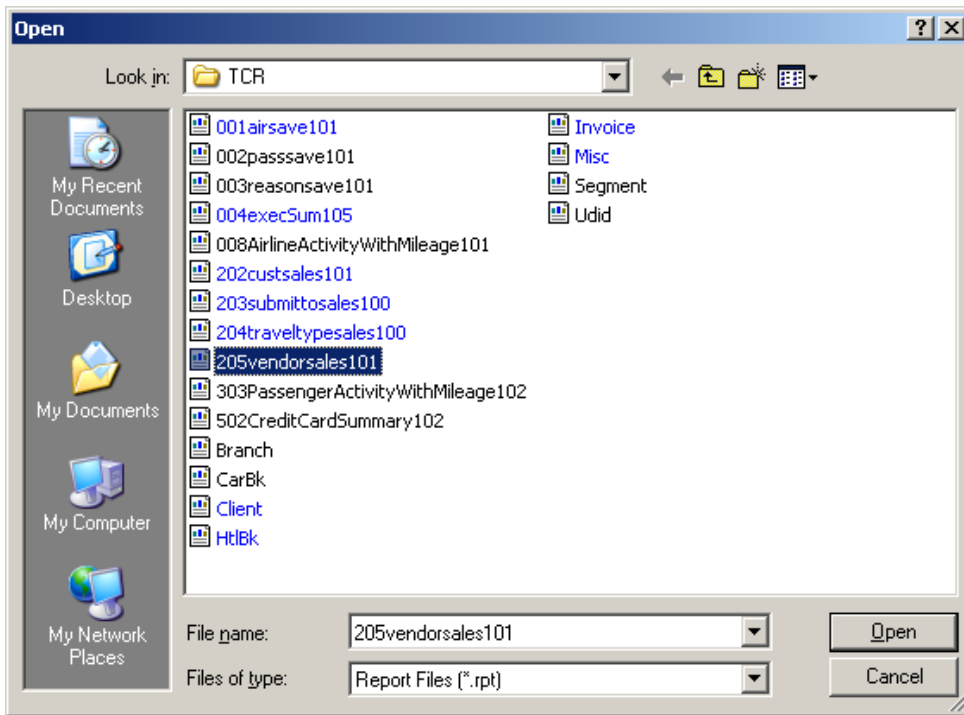
The program starts with no open report.



Trams Crystal Report Viewer

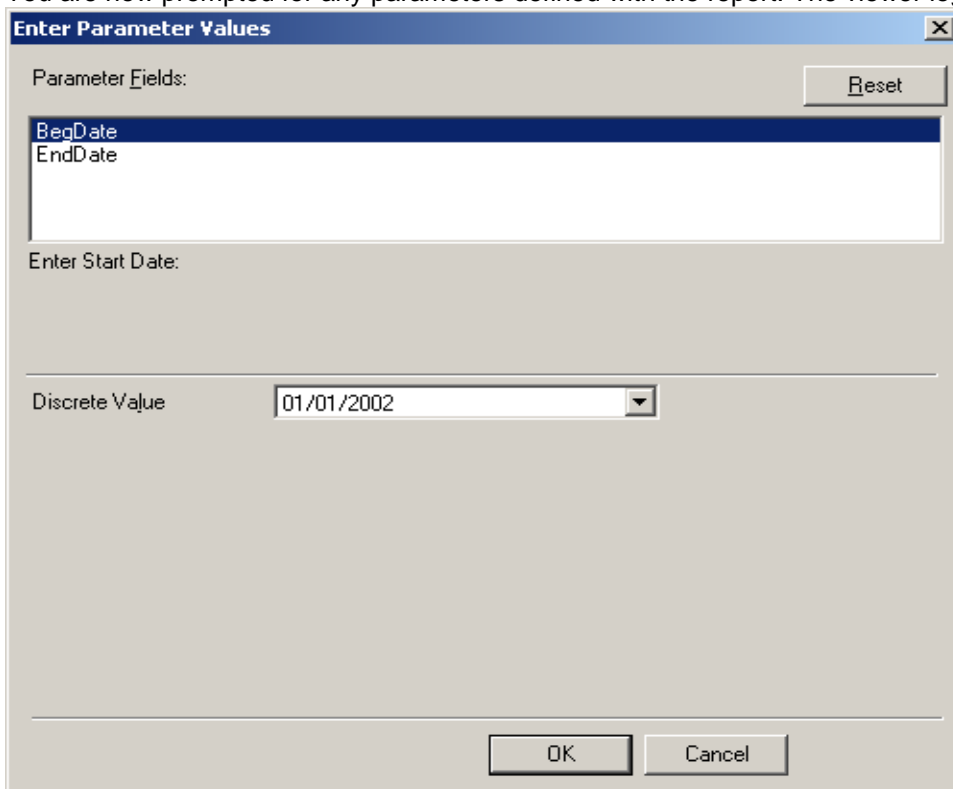
Once the viewer is installed, you can use it to run reports from the Trams Website found under the TCR Library of Downloadable Reports. To open a report with the viewer, push the "Browse" button (located to the right of the Report Name field) to browse for your report file. Select your report file and press *Open*. There is a short pause as the viewer reads the report file. Once the file is open, the viewer fills-in Report Name field with the correct path to the report.

To run the report, supply the correct User Name/Password and press *View Report*.



Open Report

You are now prompted for any parameters defined with the report. The viewer logs into Interbase and runs the report.

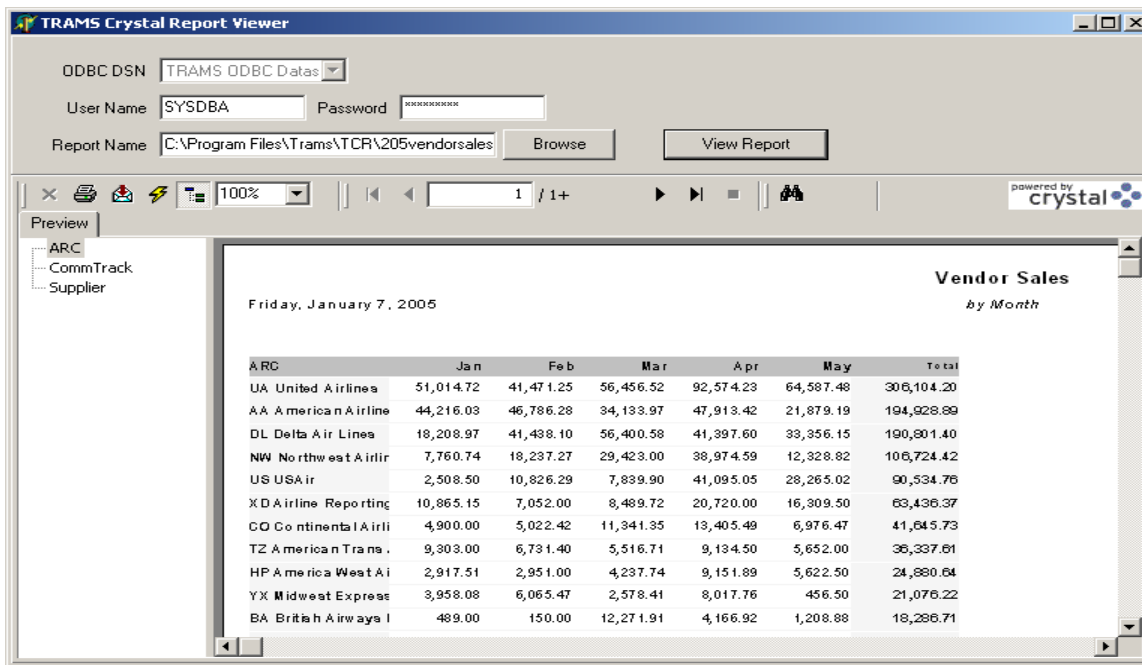


Report Parameters

Enter any required parameters for the report. If the report requires a date parameter, the Trams Crystal Report Viewer will present a Date prompt. When using a date prompt, you click the Drop Down Arrow to open a calendar style date "picker". When you have filled in the prompts, press OK to open the report viewer.

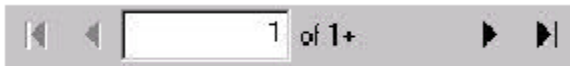
The Crystal Viewer

When you have supplied the correct connection information and entered the parameters required by the report, the results of the report query appear in the Crystal Viewer window.



Crystal Viewer

The Crystal Viewer is not part of the Trams Crystal Report Viewer. It is generated whenever a report is run using the Crystal Runtime files. The features, format and information it presents are part of the Crystal Reports application. Trams Products and Services have no control over any aspect of this screen. Here is a listing of the tool bar buttons and their functions.



Navigate: View different pages of the completed report.



Stop: Stops the query. (This is not an instant command. It may take a minute or more to execute. This button is disabled once the report is completed.)



Print: Windows "Print" dialog.



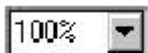
Export: Select and run the Crystal Reports export filters.



Refresh: Starts the query again. Any changes made to the database since the Viewer Window was opened are now reflected in the report.



Group Tree: Hide or show the Group Tree in the left margin.



Zoom: Changes the size of the report as it is shown in the viewer. Does not affect printing



Search the report text.

During the time that the query is running, the viewer may appear idle. Even though you don't see an hourglass, the query is running and selecting records from your database. The animated logo of the viewer will be active as records are processed for display. When you are finished viewing the report, close the viewer window. It may take a few seconds for the viewer window to save its settings and close.